

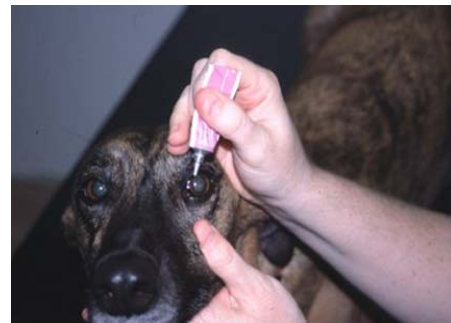


APPLICATION OF EYE MEDICATION

Your veterinary surgeon will have discussed the frequency and application of the eye medication prescribed.

Applying the medication

It is always useful to have someone hold the dog for you if at all possible. Hold the head firmly but gently and tilt the nose upwards. Remove any dried discharge from the corners of the eye with a piece of cotton wool moistened with clean water or saline solution. Ensure that no wisps of cotton wool touch the eye itself.



Application of eye ointment.

Picture courtesy of Sally Turner, MA, Vet MB,
DVOphthal, MRCVS

Applying ointment

If eye ointment has been supplied in a tube, do not point the nozzle directly at the eye. Gently part the lids between your finger and thumb and holding the tube with the nozzle parallel to the eye and approximately half a centimetre from the eye, gently squeeze a small amount of ointment across the surface. Your dog will immediately close his eye. Gently stroke your fingers across the closed lids to disperse the ointment which will rapidly liquefy when in contact with the warm tears.

Applying eye drops

If a liquid has been prescribed the technique is, if anything, a little easier. The lids are parted as before and the nozzle is held vertically, approximately half a centimetre above the eye and one drop gently ejected on to the eyeball. Following this the procedure is exactly the same.

General tips

If you rest the hand holding the eye preparation on the dog's head, above and behind the eye, you will find it easier to get the medication into the eye. Also if the dog moves its head, you will be moving with it, and thus will be less likely to waste medication.

Sometimes although only one eye is affected your veterinary surgeon may have advised you to apply the drops to both eyes. Please remember to apply the preparation to the unaffected

eye first. It is also important to avoid touching the eye with any part of the nozzle of the eye preparation in order to reduce contamination as much as possible.

If you find it difficult to apply the medication, sometimes a simple muzzle takes the dog's mind off what is happening and will be of great assistance.

*This client education handout is based on material written by Sally Turner, MA, VetMB, DVOPhthal, MRCVS
& Trevor Turner, BVetMed, MRCVS, FRSH, MCI Arb, MAE.
Used with permission under license. ©Lifelearn Ltd, PO Box 16, Newmarket, Suffolk CB8 7TH.*